

### LT - SET FOR LUMBAR RETRACTION



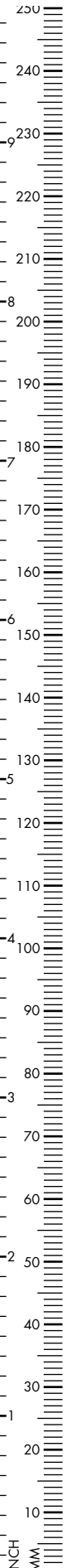
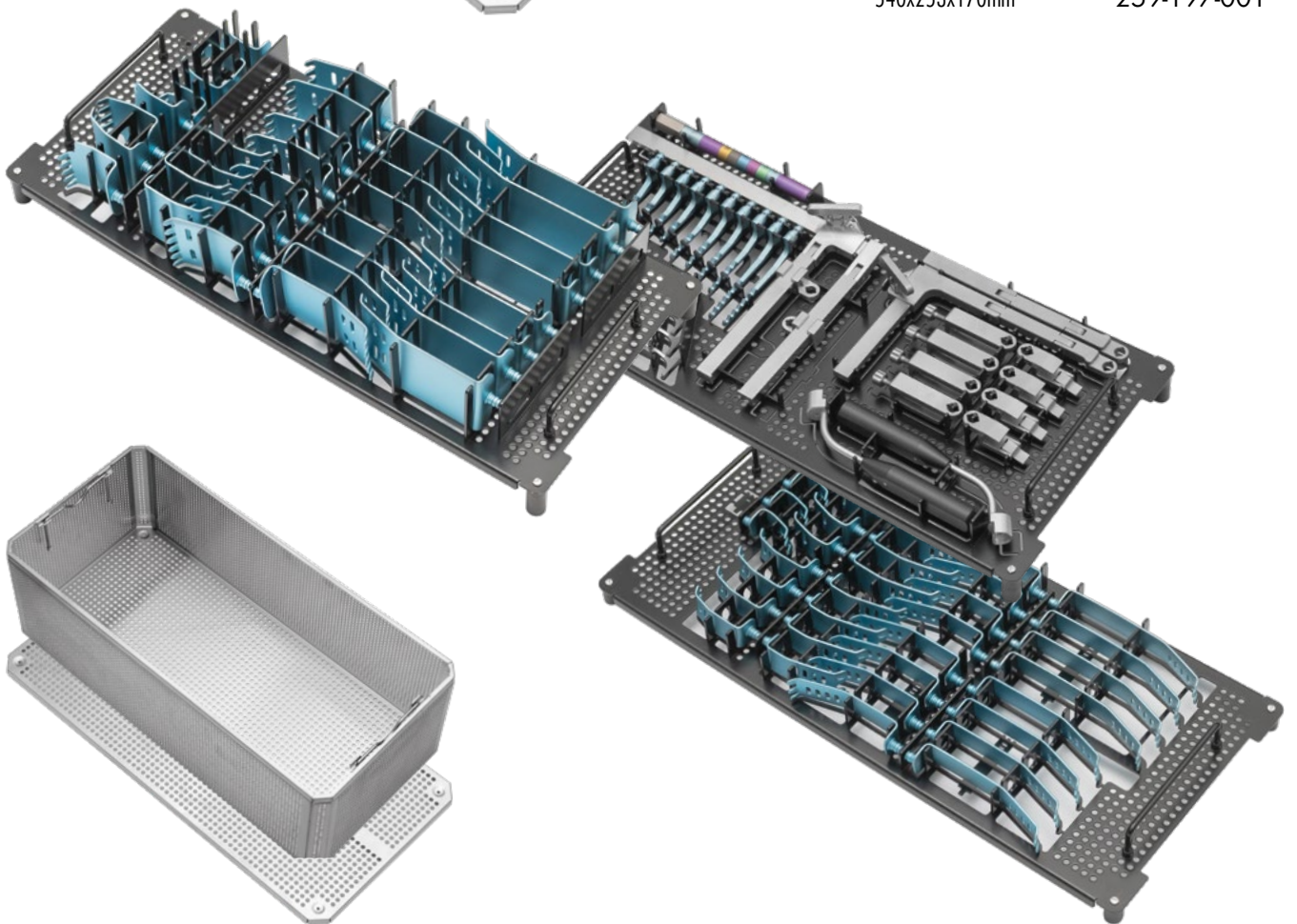
LT Lumbar Retraction Set, complete with tray

259-197-000

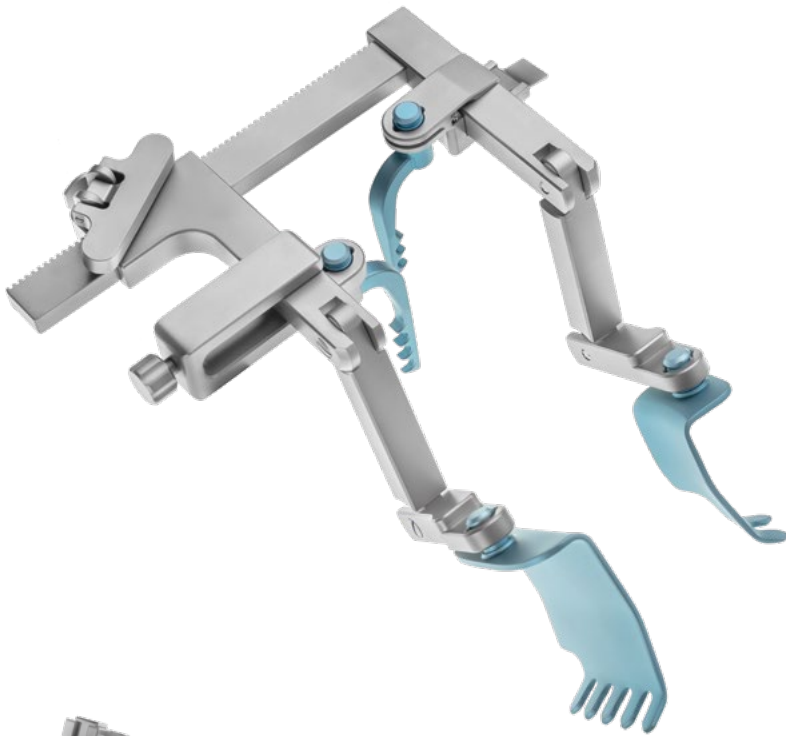
Tray only

540x253x170mm

259-197-001



### LT - SET FOR LUMBAR RETRACTION (single parts)



LT Retractor, hinged

209mm spread

259-197-002

LT Retractor, double hinged

102mm spread

259-197-003

209mm spread

259-197-004

### LT - SET FOR LUMBAR RETRACTION (single parts)



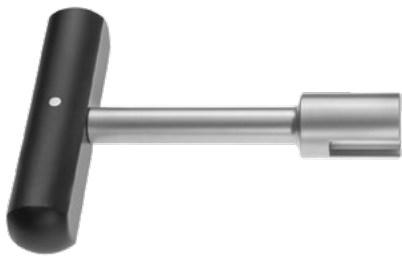
Blade connector with quick coupling

4x 259-197-005



Blade connector with screw connection

4x 259-197-006



T-Handle

1x 259-197-007



Handle, manual blade retraction

2x 259-197-009



Depth Gauge

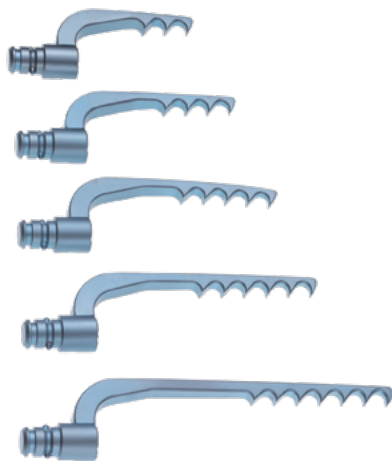
1x 259-197-008

### LT - SET FOR LUMBAR RETRACTION (single parts)



LT Valve, 6 teeth, 60mm wide, 2x

50mm depth	259-197-650
60mm depth	259-197-660
70mm depth	259-197-670
80mm depth	259-197-680
90mm depth	259-197-690
110mm depth	259-197-691
130mm depth	259-197-693



LT Hook, toothed, 2x

34mm depth, 3 teeth	259-197-103
44mm depth, 4 teeth	259-197-104
54mm depth, 5 teeth	259-197-105
64mm depth, 6 teeth	259-197-106
84mm depth, 7 teeth	259-197-107



LT Valve, left, 2 teeth, 2x

30mm width, 40mm depth	259-197-111
60mm width, 45mm depth	259-197-112



right, 5 teeth, 2x

30mm width, 40mm depth	259-197-113
60mm width, 45mm depth	259-197-114

### LT - SET FOR LUMBAR RETRACTION (single parts)



LT Valve, 3 teeth, 24mm wide, 4x

30mm depth	259-197-330
40mm depth	259-197-340
50mm depth	259-197-350
60mm depth	259-197-360
70mm depth	259-197-370
80mm depth	259-197-380
90mm depth	259-197-390
110mm depth	259-197-410
130mm depth	259-197-430



LT Valve, 5 teeth, 45mm wide, 2x

50mm depth	259-197-550
60mm depth	259-197-560
70mm depth	259-197-570
80mm depth	259-197-580
90mm depth	259-197-590
110mm depth	259-197-591
130mm depth	259-197-593



LT T-Valve, 25mm wide, 1x

40mm depth	259-197-254
50mm depth	259-197-255
60mm depth	259-197-256
70mm depth	259-197-257